



Final iPhone UI
for 'Atlas' iOS App

Generated by
Eric M. Scharf
09-30-2011



AT&T

1:25 PM



Text



Calendar



Photos



Camera



YouTube



Stocks



Maps



Weather



Clock



Calculator



Notes



Settings



Flash



eHuman



Phone



Mail



Safari



iPod



AT&T 1:25 PM

The BASSETT INTERACTIVE, ANNOTATED
ATLAS of HUMAN ANATOMY



eHuman



AT&T 1:25 PM

Bassett Atlas

Search

The BASSETT INTERACTIVE, ANNOTATED ATLAS of HUMAN ANATOMY



eHuman

eHuman Bassett Atlas



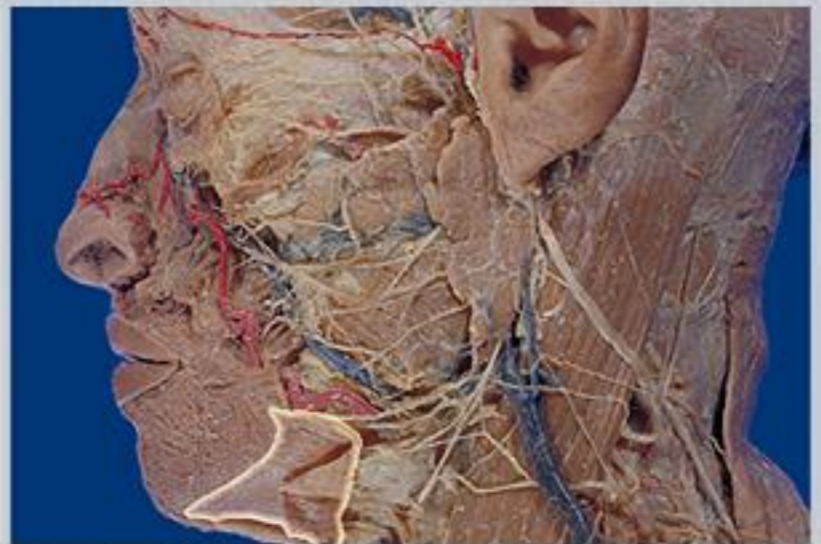
Head & Neck



AT&T 1:25 PM

Back Bassett Atlas Search

206-3 : Parotid Gland - Platysma
[cut across and reflected]



The parotideomasseteric fascia has been cut away to reveal the parotid gland and various branches of the facial nerve. In

Speaker icon, Retina display icon, Settings gear icon, Close icon, Information icon



206-3 : Parotid Gland - Platysma
[cut across and reflected]

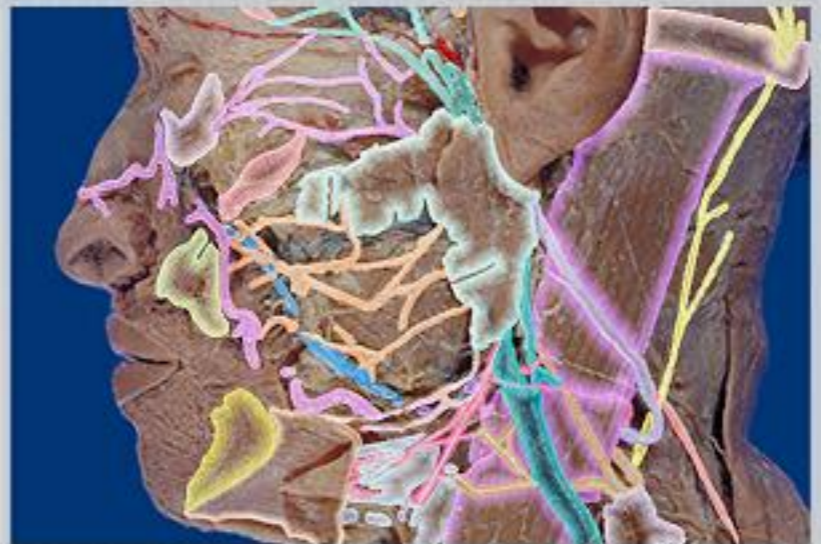


The parotideomasseteric fascia has been cut away to reveal the parotid gland and various branches of the facial nerve. In

Speaker icon, Hand icon, Gear icon, X/Check icon, Info icon



206-3 : Parotid Gland - Platysma
[cut across and reflected]



The parotidomasseteric fascia has been cut away to reveal the parotid gland and various branches of the facial nerve. In

Speaker icon, Eye icon, Gear icon, X icon, Info icon



AT&T 1:25 PM

Back

Bassett Atlas

Search

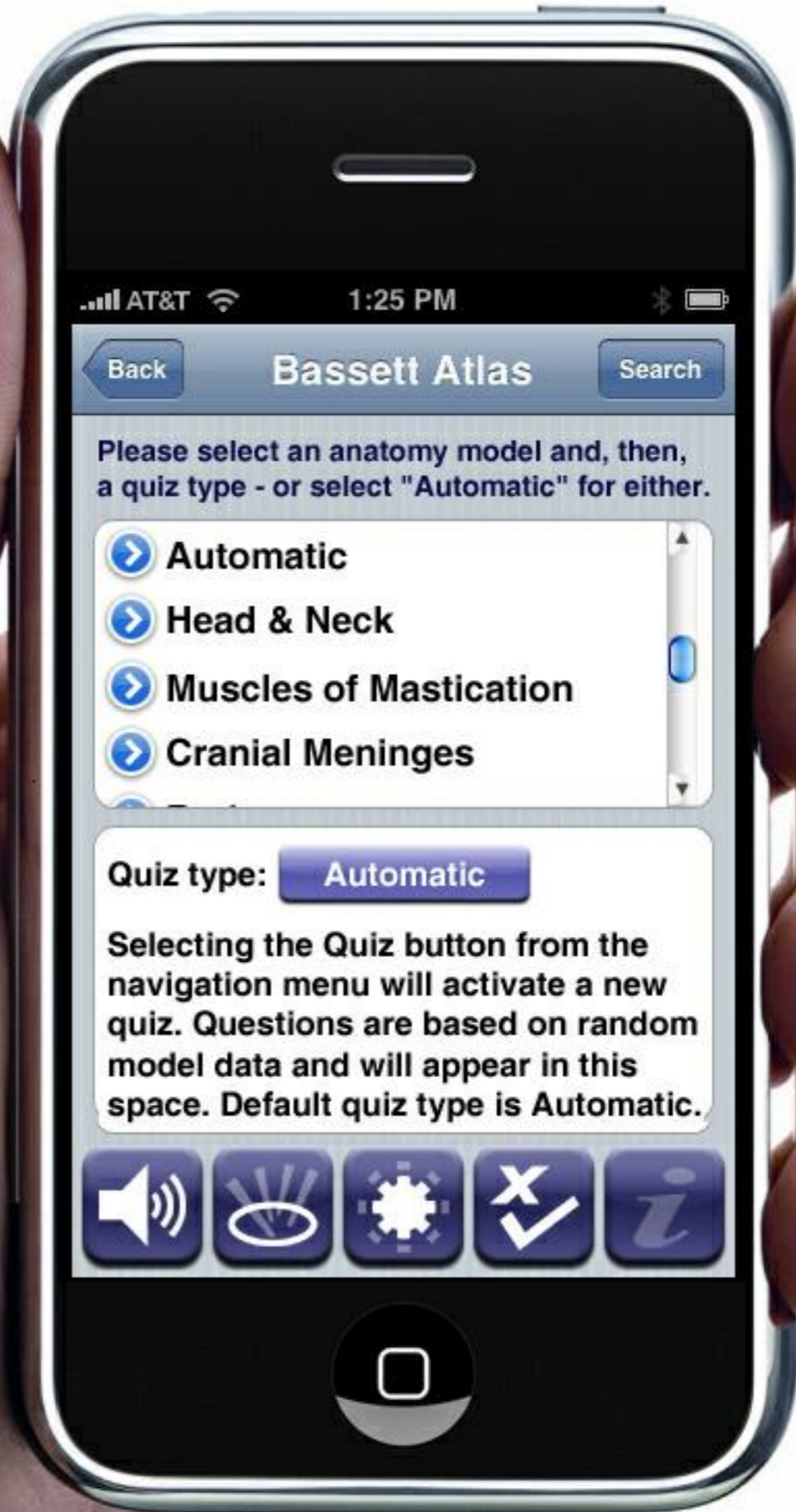
All models and components have been selected



All models and components have been selected.

Navigation icons: speaker, eye, gear, checkmark, and information.





AT&T 1:25 PM

Back Bassett Atlas Search

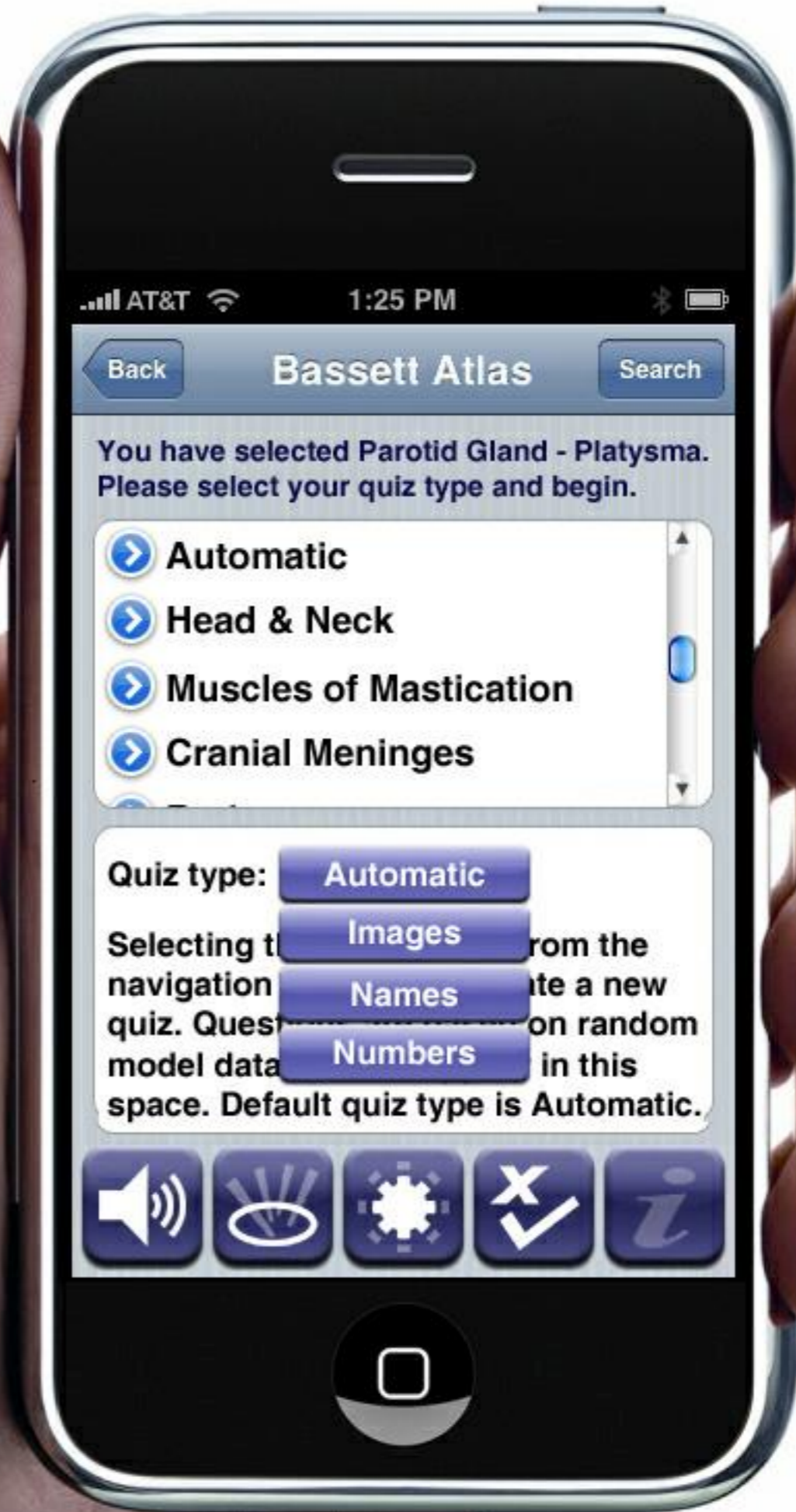
Please select an anatomy model and, then, a quiz type - or select "Automatic" for either.

- > Automatic
- > Head & Neck
- > Muscles of Mastication
- > Cranial Meninges

Quiz type: Automatic

Selecting the Quiz button from the navigation menu will activate a new quiz. Questions are based on random model data and will appear in this space. Default quiz type is Automatic.





AT&T 1:25 PM

Back Bassett Atlas Search

You have selected Parotid Gland - Platysma. Please select your quiz type and begin.

- > Automatic
- > Head & Neck
- > Muscles of Mastication
- > Cranial Meninges

Quiz type: **Automatic**

Selecting from the navigation to create a new quiz. Questions on random model data in this space. Default quiz type is Automatic.

Images

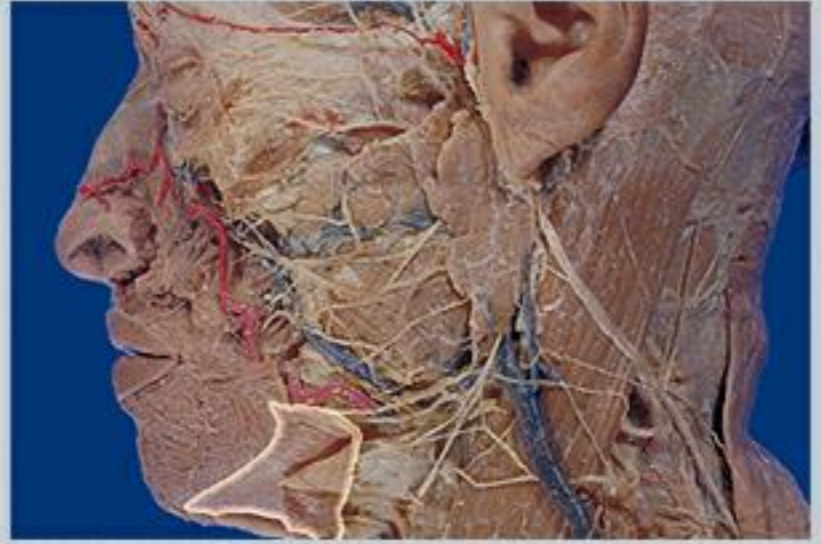
Names

Numbers



AT&T 1:25 PM

Back Bassett Atlas Search



Quiz type: Automatic

Question 6 of 30: Select the name below that correctly matches the highlighted region in the image above.

Temporal fascia [cut]





AT&T 1:25 PM

Back Bassett Atlas Search

Anatomy models ?

eHuman.com
developers of 3-D Interactive Digital Anatomy

Q W E R T Y U I O P
A S D F G H J K L
Z X C V B N M
123 space return



AT&T 1:25 PM

Back Bassett Atlas Search

Anatomy models ?

- Thoracic Wall, Diaphragm
- Mediastinum
- Abdominal Viscera
- Posterior Abdominal Organs
- Retroperitoneal

Q W E R T Y U I O P
A S D F G H J K L
Z X C V B N M
123 space return



AT&T 1:25 PM

Back Bassett Atlas Search

Search the HELP file here or below ?

eHuman.com

developers of 3-D Interactive Digital Anatomy

The Bassett Dissection Atlas requires java version 1.5 or later is installed on your machine.

If you are not sure your machine has java installed yet, please Click HERE to

Q W E R T Y U I O P
A S D F G H J K L
Z X C V B N M
123 space return



eHuman.com

developers of 3-D Interactive Digital Anatomy



- About Dr. Bassett
- About The Authors
- About The Software
- eHuman Web Site

In 1948, as Assistant Professor of Anatomy at Stanford University, David L. Bassett began to focus his research time on the preparation of the Stereoscopic Atlas of Human Anatomy (Bassett, 1963). It was in August of that year that he met William B. Gruber, inventor of the well-known Viewmaster system and the photogrammer.

Speaker icon, 3D eye icon, Gear icon, Checkmark icon, Info icon

